

HOW DOES AI DETECTION WORK?

A GUIDE FOR TEACHERS

Students and teachers can both benefit from artificial intelligence (AI), but ensuring that the technology is being used ethically and responsibly is important. Software that detects if content is created by a human or AI can help teachers ensure that their students aren't using AI to avoid doing their work themselves.



HOW STUDENTS ARE USING AI: STATISTICS AND SURVEYS

AI technology has become more popular in recent years, and some students are embracing it.

STUDENTS ARE USING CHATGPT

ChatGPT is an AI chatbot that interacts with users through dialogue.

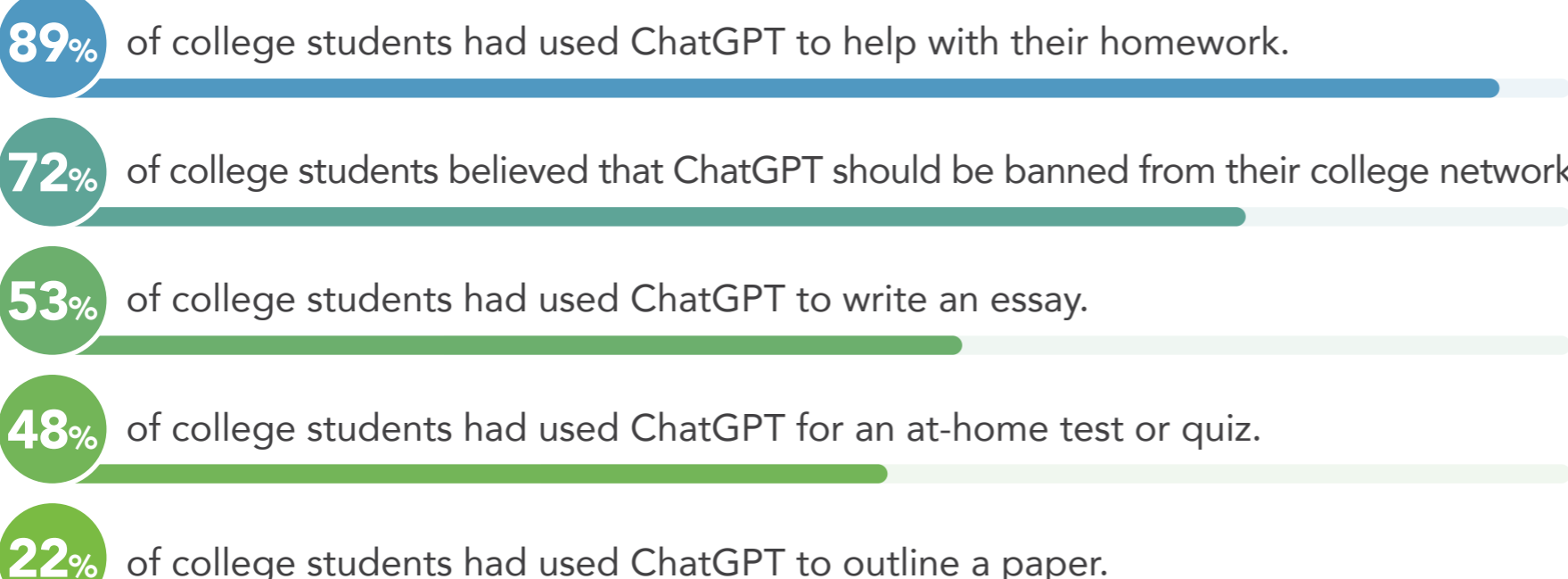


Users can ask the AI questions and receive fast answers.

Though some improvements need to be made, ChatGPT can be a fast way to get information, create content and get help with work.

College Students

In January 2023, Study.com surveyed 1,000 college students and found the following:

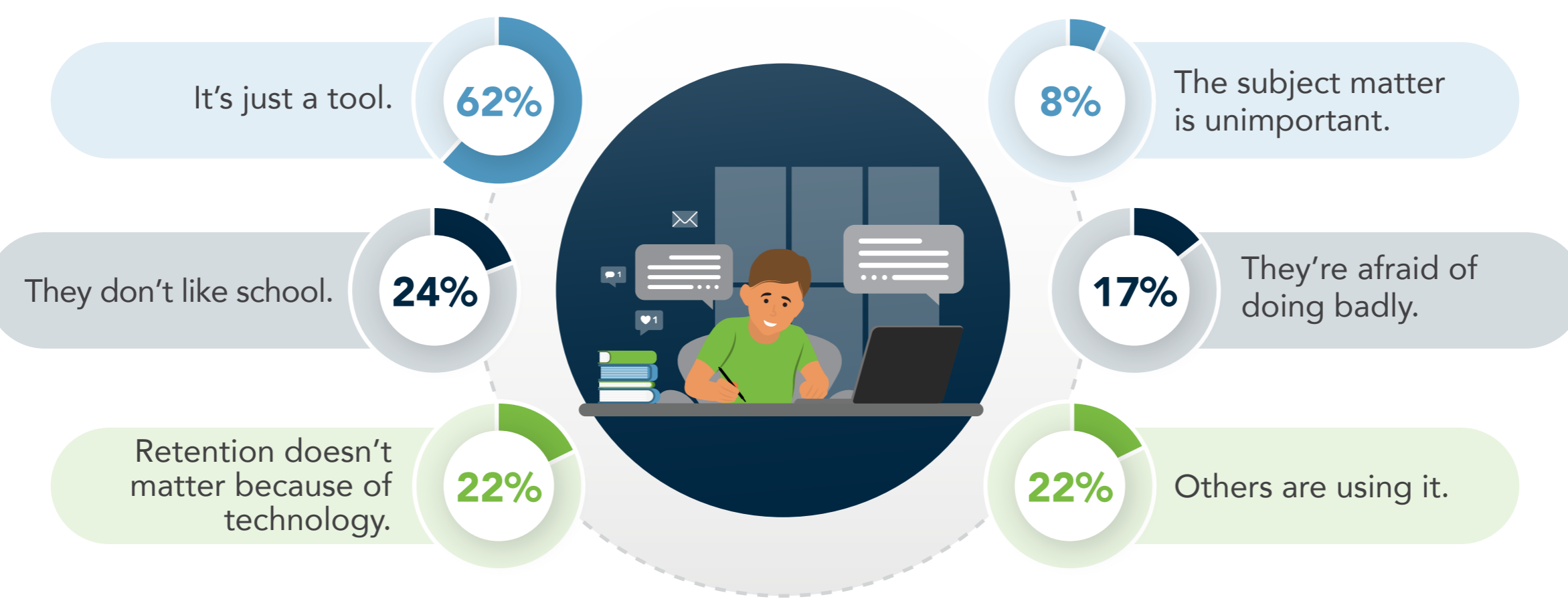


Teen Students

According to a survey by research firm Big Village:



When asked why they'd use AI, teen students replied as follows:



OTHER AI PROGRAMS USED BY STUDENTS

Bing

- » Combines Microsoft's search engine, Bing, with ChatGPT.
- » Students can use Bing Chat to find sources and get information quickly and easily.

Bard

- » Generates creative content and text and writes code.
- » Bard also uses Google Lens to analyze images.

CLAUDE 2

- » Analyzes about **75,000** words and generates responses of about **3,000** words.
- » Claude 2 can also summarize content and perform similar tasks.

DETECTING AI IN STUDENTS' WORK

Because AI technology has become so available recently, teachers and schools are still trying to figure out how to handle it.

TEACHERS AND AI

According to a 2023 survey, about **60%** of teachers know about ChatGPT.

» However, 3 in 5 teachers have never used it.

A total of **50%** of teachers believe that AI and ChatGPT will change their curriculum and the classroom in general.



WHAT'S AN AI DETECTOR?



AI detectors are AI programs that can detect if another program or a human created something.

» AI detectors are trained on the same information as AI content programs.

It can be difficult for people to tell if a student or an AI program created something. As AI technology continues to develop, detection may get even harder.

ARE AI DETECTORS ACCURATE?

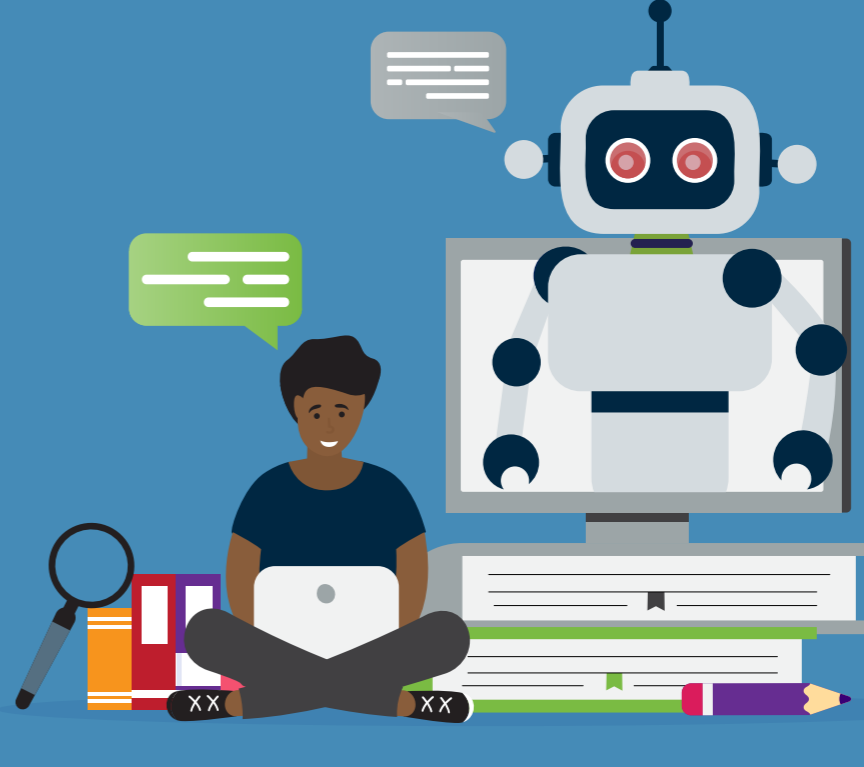
AI creator tools and AI detection tools will never be perfectly accurate.

» Humans created AI programs and are always training them on new information.

AI detectors are a good way for teachers to catch students who are using AI to complete homework.

» AI content programs still produce mistakes and are usually fairly simple to spot.

» An AI detection program can save teachers time and catch anything that may slip past them.



AI DETECTION PROGRAMS

CopyLeaks

- CopyLeaks uses algorithms to detect if a human or AI has written the content, such as essays, blogs and books.
- Text is pasted into a plagiarism checker on the website, and the results are produced in seconds.
- The first 250,000 words are free, but users will have to pay for an account after that.

Content at Scale

- Content at Scale uses natural language processing models to detect if a human or AI created the content.
- Full essays and articles can be pasted into the text area.
- » Up to 25,000 characters.
- It's free to use.

GPTZero

- GPTZero was created specifically for educators.
- Text can be pasted directly into the program, but PDF, Microsoft Word and text files can also be uploaded.
- It's free, but requires users to create an account.

HOW AI CAN BENEFIT STUDENTS AND TEACHERS

AI has uses beyond helping students with homework, and teachers are bringing AI into the classroom to take advantage of those uses.

The Office of Educational Technology at the U.S. Department of Education created a report in May 2023 to provide insight and recommendations for schools and teachers who want to use AI.

Its main piece of advice is to practice "ACE in AI."

Always Center Educators (ACE) in AI



AI isn't a replacement for teachers, but a tool they can use to lighten their workload and provide more individualized support to students.

It's important to let teachers decide when and how to use AI.

Improving Teaching Jobs

AI can handle low-level details.

- Teachers can use AI to set notifications, timers and reminders.
- Teachers can also have AI send resources to students, so they don't have to record what they're doing.
- AI can record lectures, create notes and control presentation displays.



Providing More Attention

- Teachers are pulled in a lot of directions during class, and they can't be with students at every moment.
- AI can help students do homework or keep them on track in class.
- AI can also create small assignments, provide feedback and help when a student gets stuck.

CONCLUSION

AI detection software allows teachers to use AI in their classrooms while keeping students from relying too heavily on the technology. Teachers can use AI to help them give students more attention, make presentations easier, and track metrics and lessons. While some students do use AI to do their homework, most seem to agree that AI may lead to cheating and plagiarism.



AUGUSTA UNIVERSITY

ONLINE

augusta.edu/online/med-instruction.php

Sources
<https://openai.com/blog/chatgpt>
<https://study.com/resources/perceptions-of-chatgpt-in-schools>
<https://edchoice.morningconsultintelligence.com/assets/231100.pdf>
<https://tech.ed.gov/files/2023/05/ai-future-of-teaching-and-learning-report.pdf>
<https://www.educatorstechnology.com/2023/02/6-of-best-ai-content-detectors-for.html>
<https://www.govtech.com/education/k-12/survey-most-teens-think-using-ai-for-schoolwork-is-cheating>
<https://www.educationnext.org/a-i-in-education-leap-into-new-era-machine-intelligence-carries-risks-challenges-promises/>